



FD 290 Tabber shown with optional FD 280-10 Heavy Duty Feeder and FD 260-20 Output Conveyor

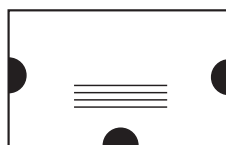
The Formax **FD 290 Crash and Edge 90 Degree System** is the ideal solution to meet all current and future USPS tabbing requirements. The FD 290 combines the FD 280 Double-Head Edge Tabber and FD 260 Single-Head Crash Tabber for one-pass tabbing of booklets and virtually all other tabbing jobs. The FD 290 applies edge and top tabs in a single pass, processing up to 15,000 pieces per hour.

A variety of 1" and 1.5" tab stocks can be used, including clear, translucent and paper, with built-in waste take-up spools to reduce down time. It has the unique ability to easily change between 1" and 1.5" tabs, simply by flipping a switch. Tabs can be fed fan-folded or from rolls for higher volume. The FD 290 can also be used in-line with other tabletop labelers, feeders, and printers.

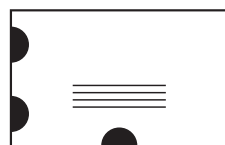
With the addition of the optional **FD 280-10 Heavy Duty Feeder**, operators can input a stack of up to 12" of material to be tabbed, up to 3/8" thick. The optional **FD 280-20 High Volume Tab Delivery Module** handles rolls of up to 150,000 tabs, which reduces down-time caused by reloading tabs. The optional **FD 260-20 Conveyor** offers adjustable speed from 0 - 120 fpm, and stacks tabbed pieces in a neat, sequential order for easy removal.

Various Tabbing Positions

Feed Direction



One Pass



One Pass



One Pass

FD 290 Crash and Edge 90-Degree Tabber Specifications

Speed:	Tabs up to 15,000 pieces per hour
Tabs Applied:	Up to 3 tabs per pass
Document Sizes:	5" to 12" wide
Document Thickness:	Up to .25" thick, coated or uncoated
Tab Varieties:	1" or 1.5" tabs, clear, translucent or paper, circles or rectangles, on rolls with or without tractor holes
Tab Type/Capacity:	FD 280: Fan folded or high volume rolls FD 260: Roll up to 5,000 1" tabs, roll up to 5,000 1.5" tabs
Tab Spool:	Maximum roll diameter: 8.25" Core diameter: 3"
Dimensions:	34" L x 19" H x 23" W
Weight:	107 lbs
Power:	115V, 2A, 60Hz or 230V, 1A, 50Hz
Options:	FD 280-10 Heavy Duty Feeder, FD 280-20 High Volume Tab Delivery Module, FD 260-20 Conveyor, FD 260-30 Catch Tray
Features:	Built-in waste take-up spools



FD 290 Crash and Edge 90-Degree Tabber

FD 280-10 Heavy Duty Feeder Specifications

Speed:	Feeds up to 250 feet per minute
Document Sizes:	3.5" to 12" wide, up to 12" long
Document Thickness:	Up to .375" thick
Hopper Capacity:	Stack height up to 12"
Dimensions:	24" L x 24" H x 19" W
Weight:	65 lbs
Power:	120V, 50-60Hz
Features:	Friction feed, reinforced paper guides, card stack pressure plates, oscillating feeder rolls, twin separators



FD 280-10 Heavy Duty Feeder

FD 280-20 High Volume Tab Delivery Module Specifications

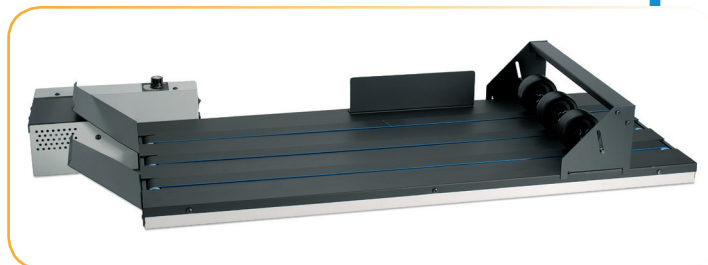
Speed:	Feeds up to 60,000 1" tabs per hour
Tab Width:	Between 1" and 1.5"
Tab Length:	1" - 1.5"
Backing Paper Width:	1" - 2"
Maximum Roll Diameter:	12" (50,000 1.5" tabs per roll or 150,000 1" tabs)w
Roll Core Diameter:	3"
Dimensions:	12.5" L x 17.5" H x 16" W
Weight:	45 lbs
Power:	120V, 2A, 60Hz
Features:	Rolls may be spliced together to avoid rethreading



FD 280-20 High Volume Tab Delivery Module

FD 260-20 Conveyor Specifications

Speed:	Adjustable, from 0 - 120 fpm
Document Sizes:	Up to 16" wide, unlimited length
Dimensions:	40" L x 5.5" H x 18.5" W
Weight:	40 lbs
Power:	115V, 2A, 60Hz or 230V, 1A, 50Hz
Features:	Weight wheel assembly included



FD 260-20 Conveyor

Formax - New Hampshire, USA
www.formax.com