

# FORMAX<sup>®</sup>

---

**CJ-10 / FD 282-30**

Conveyor Stacker

**CJ-15**

1000 Watt Dryer



## TABLE OF CONTENTS

SPECIFICATIONS	1
UNPACKING	1
CONVEYOR ASSEMBLY	2
OPTIONAL Cj-15 1K DRYER INSTALLATION	3



# SPECIFICATIONS

---

## CONVEYOR

---

<b>POWER</b>	115 VAC 50/60 HZ
<b>MAIN FUSE</b>	10 AMP / 250V
<b>SECONDARY FUSE</b>	1 AMP / 250V
<b>BELT SPEED</b>	VARIABLE, 0 TO 124 FT PER MINUTE
<b>DIMENSIONS WITH DROP TRAY</b>	51" - 59" L x 12.5" W x 5.5"-8.5" H from top of deck to bottom of tray
<b>DROP TRAY CAPACITY</b>	8" (~250 #10 Envelopes)
<b>WEIGHT</b>	36 LBS (INCLUDES STANDARD ACCESSORIES)

---

---

## CJ-15, OPTIONAL 1K DRYER (FOR COLORMAX PRINTER)

---

	1 AMP / 250V (For conveyor power)
<b>POWER</b>	115 VAC
<b>FUSE</b>	8 AMP/250V
<b>AIR FLOW</b>	57 CFM
<b>WATTS</b>	1000
<b>DIMENSIONS</b>	18.6" L x 5.7" W x 5" H

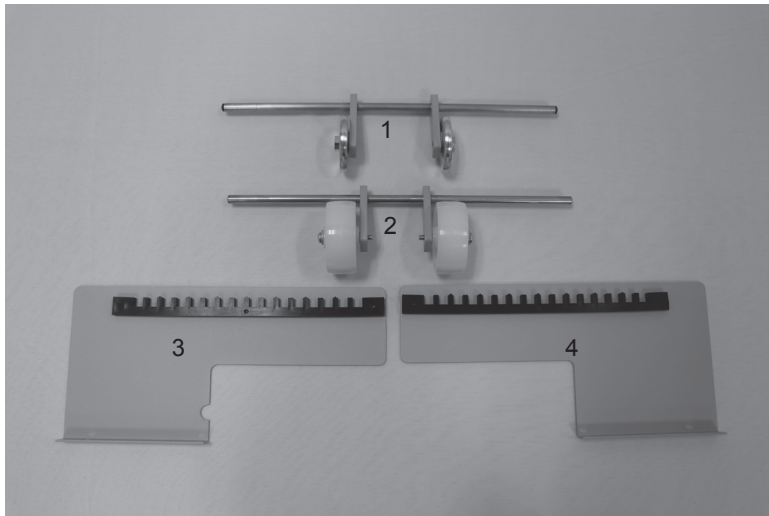
---

## UNPACKING

INSPECT FOR SHIPPING DAMAGE, MISSING PARTS AND PROPER OPERATION. REPORT SHIPPING DAMAGE TO THE CARRIER IMMEDIATELY. SAVE THE SHIPPING CARTONS AND MATERIALS IN CASE THEY ARE NEEDED TO FILE A SHIPPING CLAIM OR FOR FUTURE SHIPPING USE.

1. Check the outside of the carton for visible damage. Make note of any damage on the carrier's receiving report.
2. Open the carton.
3. Carefully remove the contents and inspect the unit for paint and structural damage.
4. Carefully check for missing parts. If damage or missing parts are noted, contact your Sales Representative immediately. Save cartons and packing materials. They may be required to substantiate a damage claim or to return a damaged unit.

# CONVEYOR ASSEMBLY



1. Exit roller assembly
2. Infeed roller assembly
3. Back infeed guide
4. Front infeed guide



CJ-10 Leg



282-30 Leg

1. Install the infeed and exit roller assemblies. First install the infeed roller guides. Turn the conveyor on its side, then using the Allen wrench supplied, remove the four Button Head Allen screws from the infeed end of the conveyor (Fig 1a).
2. Turn the conveyor upright and place the infeed rollers in position (Fig. 1b).
3. Use the four Button Head screws supplied with unit, to install the outfeed roller assembly (Fig. 1c).



Fig 1a Mount the side guides using these screws.

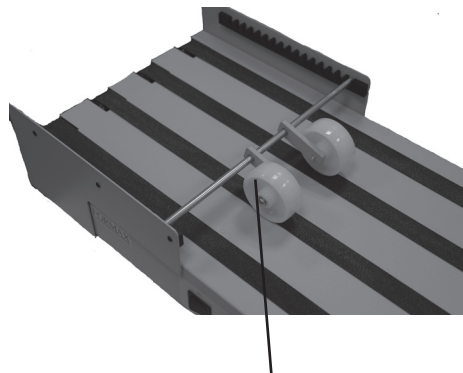
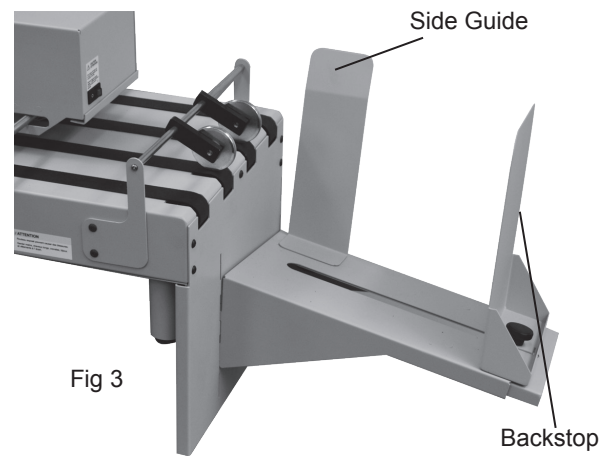
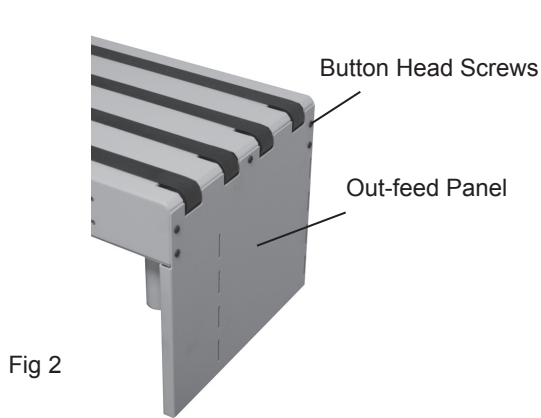


Fig 1b Set the infeed roller assembly onto the infeed guides.

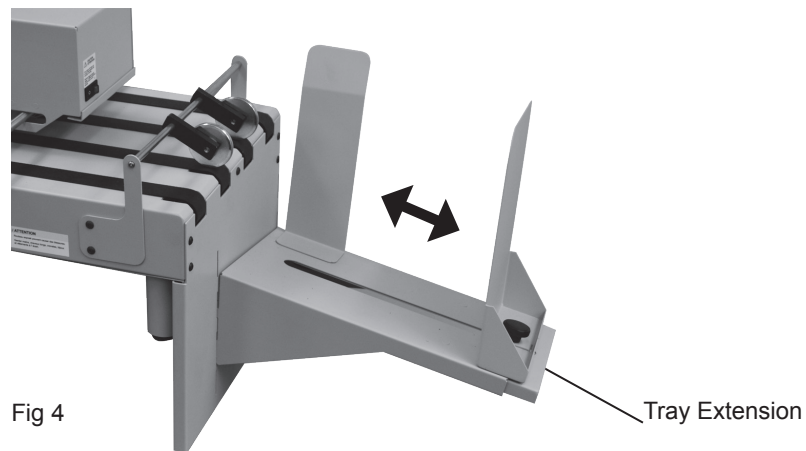


Fig 1c Mount the outfeed roller assembly.

4. Install the out-feed panel (Fig 2), using five Button Head (short) screws and the Allen wrench supplied with unit. Attach the side guide and backstop to the tray and then mount to the out-feed panel by sliding the tabs of the tray into the slots on the panel, as shown in Fig 3. The tray sits at an angle to direct printed material to the backstop, it can be raised or lowered to best stack the material being printed.



5. Adjust the backstop up or down to best fit the media being printed. The tray extension can be pulled out for longer material (Fig 4).



# OPTIONAL DRYER INSTALLATION

1. Place conveyor on its side, and remove button head screws (4 each) from the bottom pan. Install the dryer stand brackets using the screws that were removed (Fig 5).

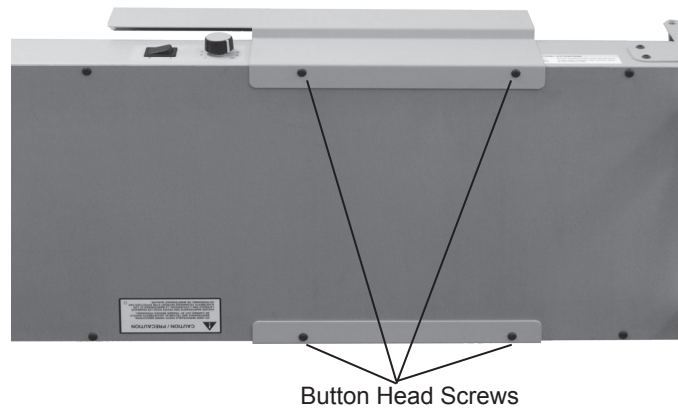
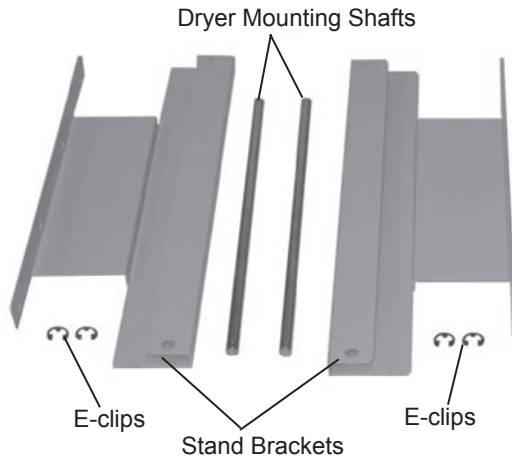


Fig 5

2. Place conveyor upright and slide dryer shafts through holes in dryer assembly. Guide shafts into one of the dryer stand brackets as the dryer is lowered into position, (Fig 6). Guide shafts into opposite dryer stand bracket (Fig 7).



Fig 6

3. Install "E-Clips" into grooves on dryer shafts (2ea. per shaft), as shown in Fig 8.
4. Insert dryer power cord into the power connection on the dryer and into "dryer outlet" connection on the conveyor. Turn on the Dryer's power switch. Dryer Unit is now ready to operate.

**Note:** Power to the dryer will only be enabled (turned on) when the conveyor is running. The dryer's power switch must also be turned on.



Fig 7

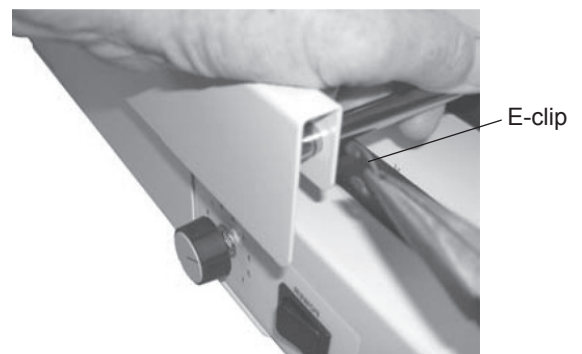


Fig 8



